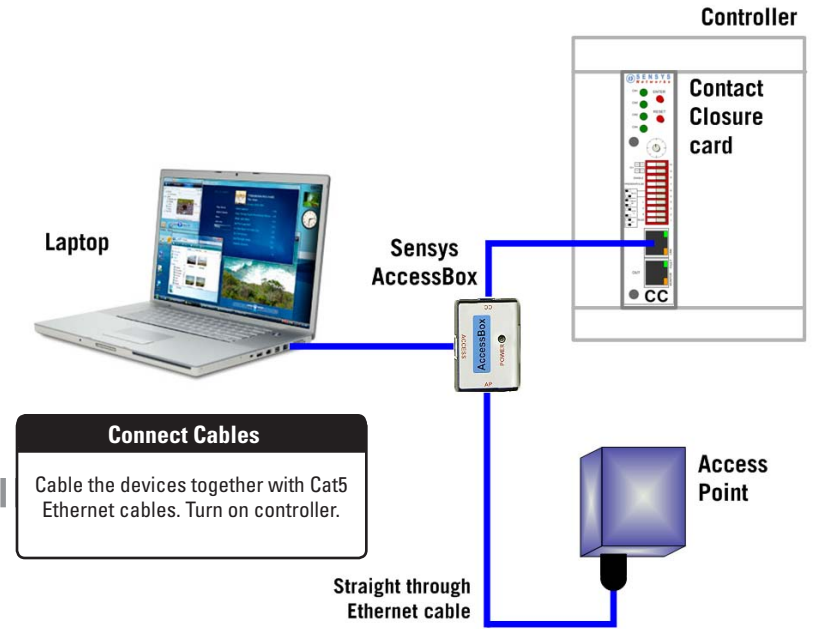
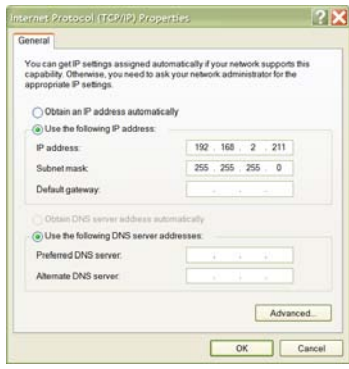
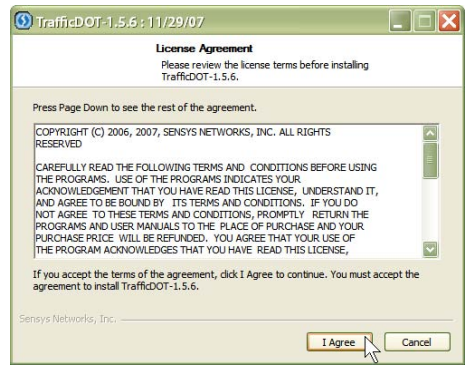


# 1 Set Up



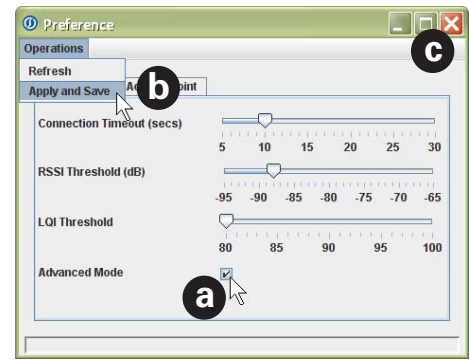
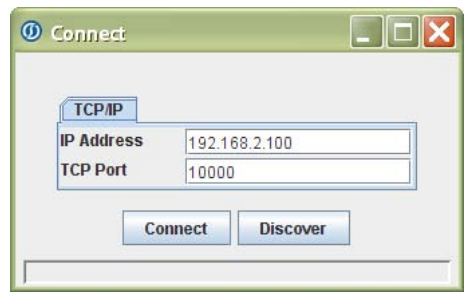
**Insert CD**  
Put the software media in the CD drive of a laptop or desktop PC.

**Install Software**  
Complete the TrafficDOT software setup wizard.

**Set IP Address**  
Set up a static IP Address of **192.168.2.211** on the local LAN port.  
Note: any IP address in the 192.168.2.xxx range may be used except 192.168.2.100.

**Connect Cables**  
Cable the devices together with Cat5 Ethernet cables. Turn on controller.

# 2 Connect



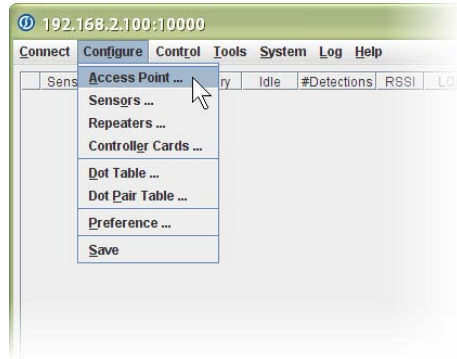
**Run TrafficDOT**  
Click the icon to start the Sensys configuration program.

**Type in IP Address**  
Complete the form as shown above and click **Connect**.

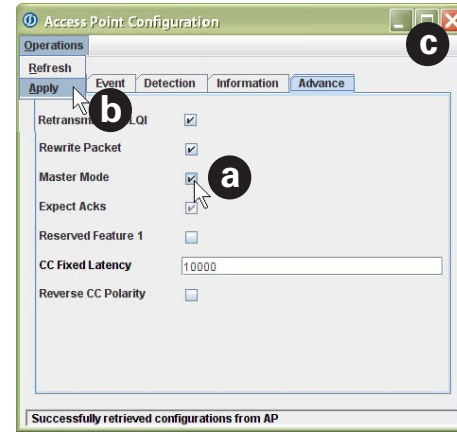
**Open Preference Window**  
Click **Preference** from the **Configure** menu.

**Set Advanced Mode**  
Fill checkbox (a), click **Apply and Save** (b), close window (c).

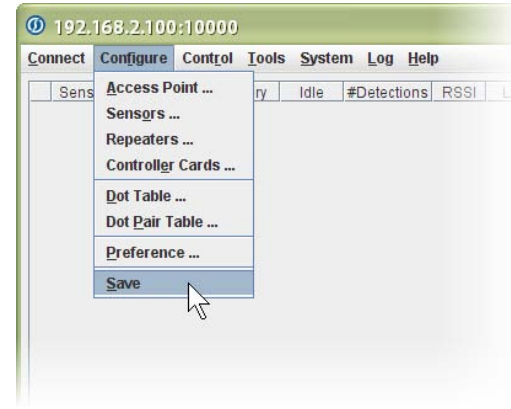
# 3 Run



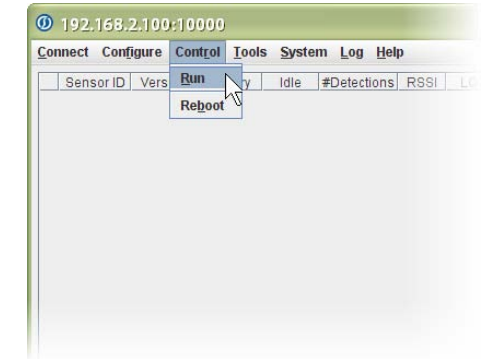
**Open AP Config Window**  
From the **Configure** menu, click **Access Point**.



**Set Master Mode**  
Fill checkbox (a), click **Apply** (b), close window (c).



**Save Changes**  
From the **Configure** menu, click **Save**.

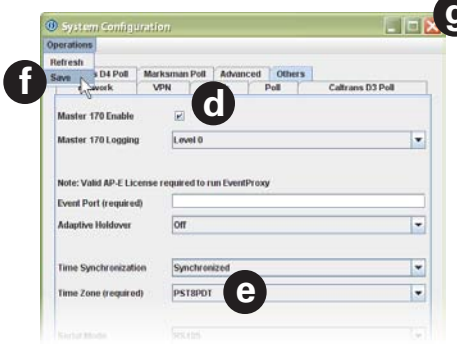


**Start AP**  
From the **Control** menu, click **Run**.

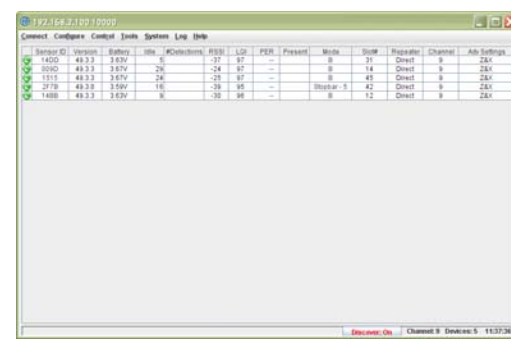
# 4 Manage



**Open System Config Window**  
From the **System** menu, click **Configuration**.



**Start Controller Link & Set Time Zone**  
Fill checkbox (d), specify Time Zone (e), click **Save** (f), close window (g).



**Main Window**  
The default radio channel of the Access Point and Sensors is Channel 0 (zero).  
All Sensors or Repeaters on the Access Point's channel are found on the Main window.  
Green icons in the first column indicate normal, expected operation.  
Use the menu options to further configure the system.  
See the **Sensys Wireless Vehicle Detection System Reference Guide** for more information