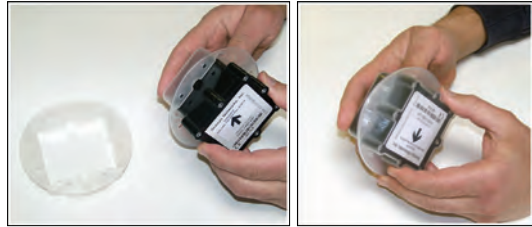


See Important Safety Warnings on Opposite Side

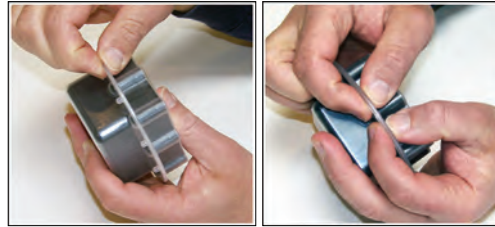
1 Assemble



Layout Parts
Lay all parts on a flat surface. Open the shell by separating the top from the bottom.



Enclose Sensor
Place Sensor in shell bottom. Fit shell top to shell bottom with short alignment pins.



Press Edges Together
Pinch shell edges together to seat pins. Do NOT use excessive force.



Press Around All Edges
Repeat prior step at all (8) locations as shown above.

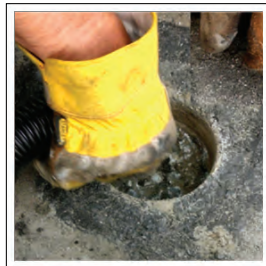


Finished Sensor
Ensure Sensor label is visible.

2 Install



Core
Core hole 4" diameter, 2 1/4" depth.



Clear
Vacuum or brush hole clear of debris. Ensure hole is dry.



Apply Epoxy
Fill EMPTY HOLE with epoxy to about 2/3 of hole depth.



Place Sensor
Ensure Sensor is 1/4" - 1/2" below surface, level, label up, and arrow points in direction of traffic.



Apply Epoxy
Fill hole with epoxy.



Installed Sensor
Allow 5 - 10 minutes to cure.

Removal

1 Chisel



Prepare

Fit a hammer drill with 4" flat blade. Mark 4 cuts around Sensor location.

Chisel

Chisel 4 cuts 1' in depth. Chisel straight down. Observe all cautions (at right).

2 Remove



Pry Upward

Insert 3' pry bar. Pry upward with moderate force. Alternate prying using all drill cuts.

Remove Shell Top

Carefully work the shell top loose and remove it. Do **not** make contact with the Sensor.

Remove Sensor

Pull Sensor from shell. Clear all dust and debris from it. Leave base of shell in road.

Quick Start Guide: VSN240-F, VSN240-T

Warnings

Lithium Thionyl Chloride Batteries

Sensys Networks uses Lithium Thionyl Chloride batteries in the following products:

- Sensors (VSN240-F, VSN240-T, VSN240-S)
- Repeaters (RP240-B, and RP240-B-LL)

Lithium batteries are widely used in electronic products because they contain more energy per unit -weight than conventional batteries. However, the same properties that deliver high energy density also contribute to potential hazards if the batteries are damaged. Improper use or handling of the batteries may result in leakage or release of battery contents, explosion or fire.

Following are the recommendations of the battery manufacturer for proper use and handling of batteries in the Sensys devices mentioned above:

- DO NOT charge or attempt to recharge the batteries (batteries are NOT rechargeable)
- DO NOT crush or puncture batteries
- DO NOT short-circuit the batteries
- DO NOT force over-discharge of the batteries
- DO NOT incinerate or expose batteries to excessive heating
- DO NOT expose battery contents to water
- DO dispose of batteries and devices containing batteries in accordance with local regulations

Sensys Networks sensors contain no serviceable parts and should never be disassembled. Installation and removal of sensors from pavement should only be done by trained personnel and care should be taken to insure that the sensor casing is not punctured or crushed.

Additional safety information is available from the battery's manufacturer:

Sensor battery cell: www.able-battery.com/msds/ABLE_MSDS_ER14505.pdf
Repeater battery cell: www.able-battery.com/msds/ABLE_MSDS_ER34615.pdf



**DO NOT EXCEED
1" DEPTH**



**DO NOT CONTACT
SENSOR**